

A modern, bright living room with a large white sofa, a coffee table, and a dining area in the background. The room has large windows and a clean, minimalist design.

Lenercom

Energize the world

**Energy Storage Product and
System Solution Provider**

Hunan Lenercom Technology Co.,Ltd.

☎ +86 181 0841 3339 ✉ info@lenercom.com 🌐 www.lenercom.com

📍 Lugu science and technology innovation and entrepreneurship Park, Changsha City, Hunan Province



Company profile

LENERCOM is a national hi-tech enterprise specialized in R&D, manufacturing and service of micro-grid ESS. We focus on the innovative application of renewable energy, and committed to provide residential, commercial and industrial users with integrated photovoltaic ESS solutions. We are building a global service network, and continuously creating value for our customers.

Marketing & Service network



Series of products

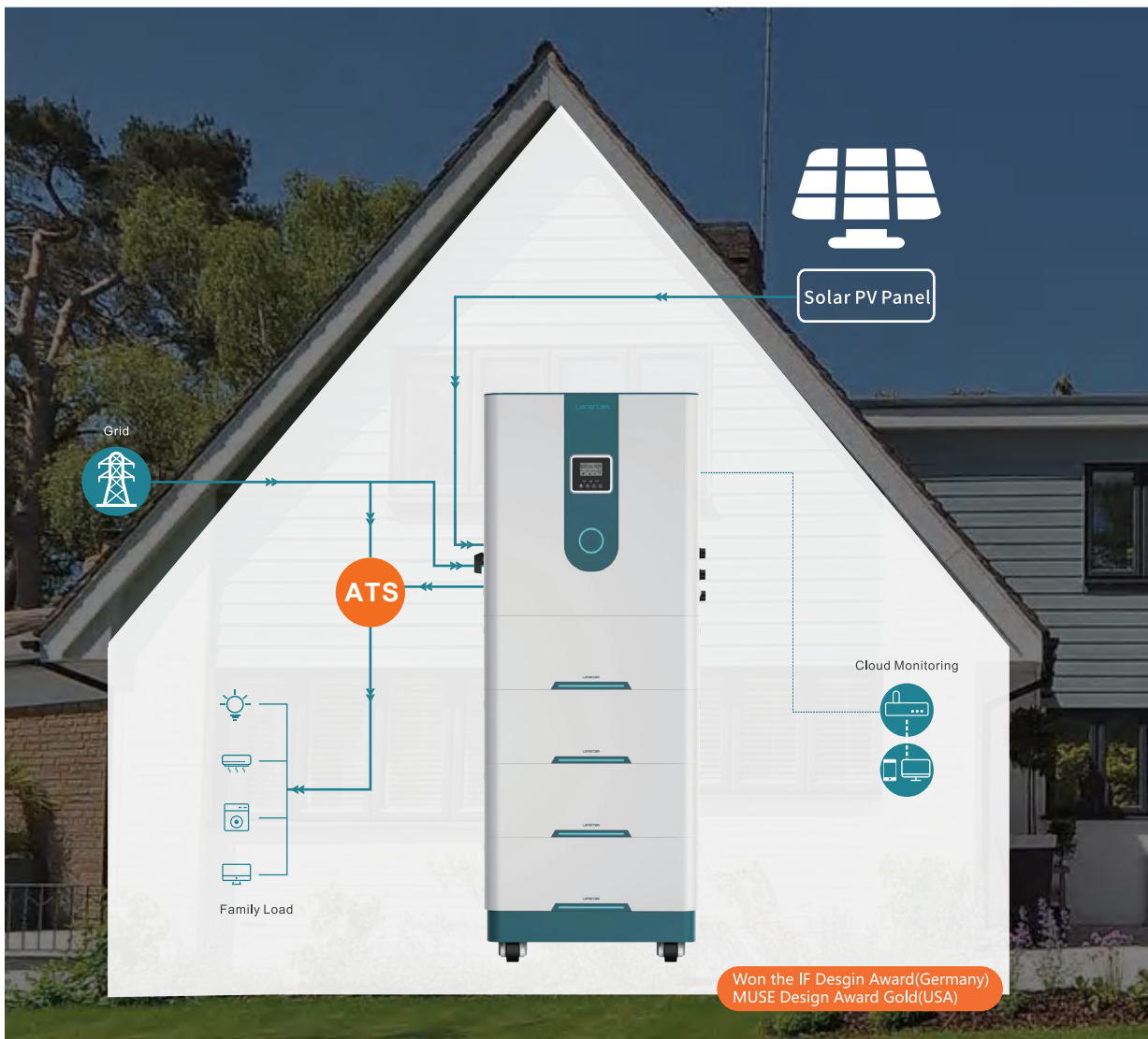
LenercomESS



iF Design Award
MUSE Design (Gold Award)



Lenercom RESS (Low Voltage Series)



Technical Parameters



LC-E2-505



LC-E2-510



LC-E2-515



LC-E2-520



LC-E2-525

Performance Specifications

Phase	Single Phase
Rated Output Power	5000W
Rated Output Current	21.7A
Single Battery Capacity	5.12kWh
No. of Expandable Batteries	1~5
Usable Capacity Range	5.12-25.6kWh
Battery Type	LiFePO ₄
Rated Output Voltage	(220V~240V) ±5%
Grid Voltage Range	170-280V(UPS) 90-280V(APL) 183-253V(VDE)
Rated Grid Frequency	50Hz/60Hz Auto Detect
PV Max Input Power	4000W
MPPT Voltage Range	64~130V
System Charge & Discharge Efficiency	93%
Grounding Mode	TN-S
Switching Time	10ms(UPS、VDE) 20ms(APL)
Designed Lifespan	10Years
Warranty *	5 years Product Warranty 10 years Performance Warranty

*Please observe our applicable warranty conditions.

Standard and Certification

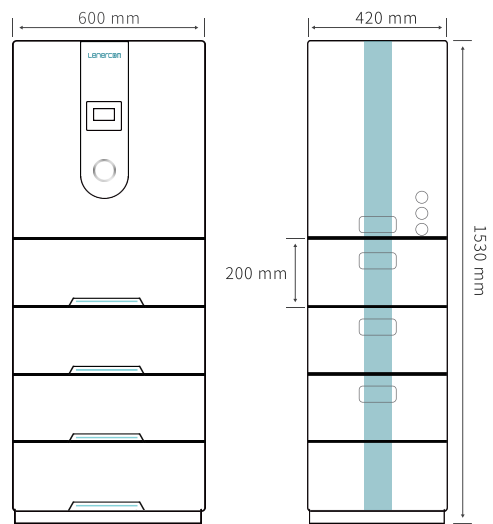
Safety Regulations	IEC 62109-1/-2 IEC 62477
EMC	EN IEC61000-6-1:2019 EN IEC61000-6-3:2021

* We reserve the right to make technical changes. The values, outputs, other technical data, images, and diagrams in this prospectus and in data sheets, advertisements, and other promotional documents are approximate guidelines in all cases where they have not been identified as binding.

Mechanical Specifications*

Inverter Dimensions/Weight	600/420/600mm/38.5kg
Battery Dimensions/Weight	600/420/200mm/54kg
Base Dimensions/Weight	600/420/130mm/17.5kg
Mounting Options	Stacking

* The dimension of the product shall be subject to the real object, with a tolerance of ±3%.



*The dimension of the above picture corresponds to the product model: LC-E2-520.

Enviromental Specifications

Operating Temperature *	-15°C~55°C
Recommend Temperature	25°C±5°C
Altitude	≤2000M
Humidity	≤85% RH Without Condensation
Ingress Rating	IP20

* When the temperature is below 0°C or above 40°C, the performance will be limited.

24-hour uninterrupted power supply

Output Power: 3-5kW
Battery Capacity: 5.12-25.6kWh
Phase: Single Phase



Wide Voltage Input Constant Voltage Output

It can prevent safety hazards such as damage to household appliances and short circuits caused by power grid voltage fluctuations and shocks.



non-inductive switching

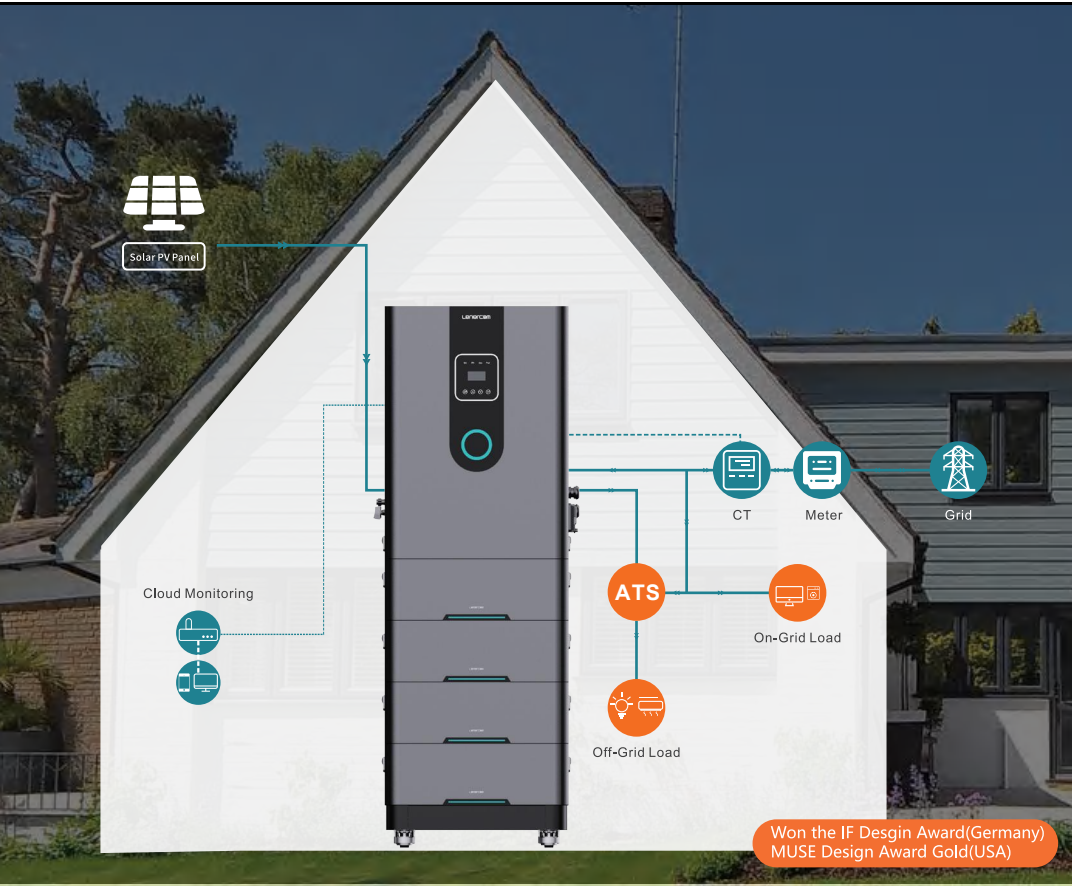
20Ms off-grid/grid-connected
automatic switching



Multi-source Energy Input

Adopt multi-source power
input like PV and grid

Lenercom RESS (High Voltage Series)



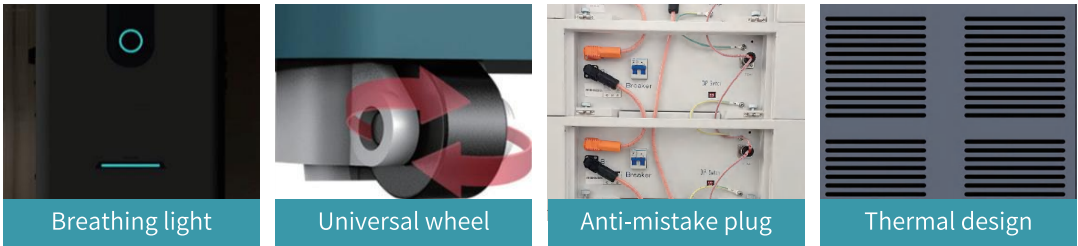
More possibilities for home electricity expansion

Output Power: 8-12kW
Battery Capacity: 10.24-30.72kWh
Phase: Three Phase

Quick & Easy Installation
All-in-one stackable design, plug-and-play

Safe Energy Storage Technology
Multiple safety protection technology, load installers, users a full range of protection

Intelligent Control
APP Remote Monitoring



Performance Specifications

Phase	Three-Phase
Rated Output Power	10000W
Inverter ADAPTS the battery voltage range	125-600VA
Max. Photovoltaic input current	13A/13A
Single Battery Capacity	5.12kWh
Max No. of Expandable Batteries	4~6
Usable Capacity Range	20.48-30.72kWh
Battery Type	LiFePO ₄
Battery Output Voltage	166~233V (LC-E2-1020T) 208~292V (LC-E2-1025T) 249~350V (LC-E2-1030T)
Grid Voltage Range	360V~440V
Rated Output Voltage	3W+N+PE, 220 / 380 V 230 / 400 V; 240 / 415 V
Rated Grid Frequency	50Hz/60Hz Auto Detect
PV Max Input Power	15000W
MPPT Voltage Range	180V~850V
Grounding Mode	TN-S
Switching Time	≤10ms
Max. Efficiency	98.2%
European Efficiency	97.5%
MPPT Efficiency	≥99.5%
Warranty	5 years Inverter Warranty 10 years Battery Warranty

*Please observe our applicable warranty conditions.

Standard and Certification

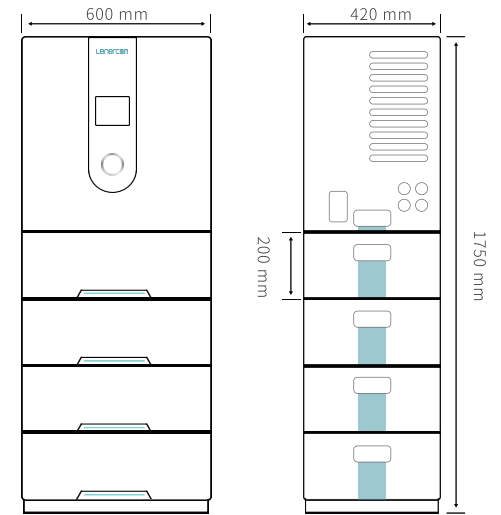
Safety Regulations	IEC 62109-1/-2 IEC 62477
EMC	EN IEC 61000-6-1:2019 EN IEC 61000-6-3:2021
Grid Regulations	G99 EN 50549 VDE 4105 EN 50549-1/Rfg:2016/NC Rfg:2018/PTPIREE:2021 IEC 61727/62116/61683

* We reserve the right to make technical changes. The values, outputs, other technical data, images, and diagrams in this prospectus and in data sheets, advertisements, and other promotional documents are approximate guidelines in all cases where they have not been identified as binding.

Mechanical Specifications *

Inverter Dimensions	600/420/820mm
Battery Dimensions	600/420/200mm
Base Dimensions	600/420/130mm
Mounting Options	Stacking

* The dimension of the product shall be subject to the real object, with a tolerance of ±3%.



*The dimension of the above picture corresponds to the product model: LC-E2-1020T.

Enviromental Specifications

Operating Temperature *	-15°C~55°C
Noise	<35dB
Altitude	≤2000M
Humidity	≤85% RH Without Condensation
Ingress Rating	IP20

* When the temperature is below 0°C or above 40°C, the performance will be limited.

Lenercom BESS

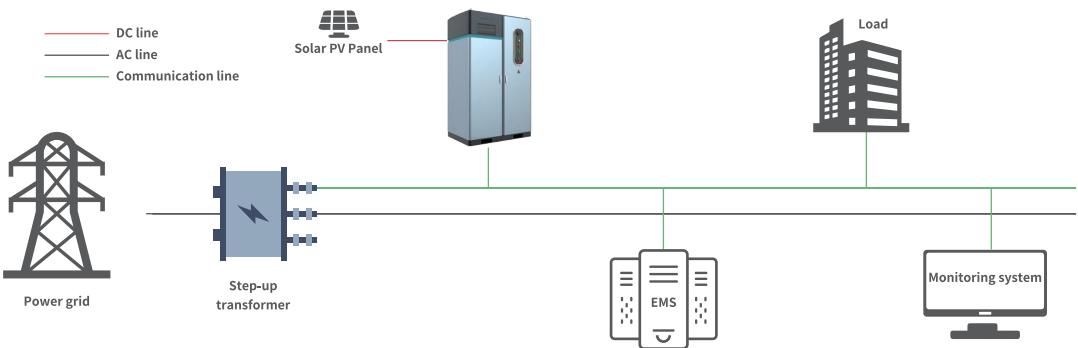


Power range 30kW、60kW

Battery capacity 129kWh

LC-B1 adopts modular integrated design, and the system includes monitoring, PCS module, LiFePO₄ battery, BMS, heat sink and fire extinguishing system. It can provide backup power or emergency power for important loads. The working mode can also be adjusted to stabilize load fluctuations, peak load shifting, and peak-valley arbitrage.

- Intelligent operation, the whole process does not require manual intervention
- Flexible configuration, free combination of power and energy
- Intelligent air-conditioning management, more energy-efficient operation
- Dynamic expansion of capacity, free choice of AC-side parallel or DC-side parallel
- Fast switching between parallel and off-grid, the switching time is less than 10ms
- APP remote monitoring



	Project	Unit	Parameter
Basic Parameter	Weight	kg	1800
	Size(width/depth/height)	mm	1470*950*2300
System Parameter	Rated Output Power	kW	30/60
	Rated Battery Capacity	kWh	129
	Battery Type	/	LiFePO ₄
	Cell Rated Capacity	Ah	120
	Grid Voltage Range	V	380× (1±15%) V
	Grid Frequency Range	Hz	49.5~50.2Hz
	Maximum System Efficiency	%	>86.2%
	Power Factor	/	±0.99
	Overload Capacity	/	110% 10min, 120% 1min
	Conversion Time	ms	<10ms
	Power Command Response Time	ms	<2ms
	AC Voltage THD/Alternating Current THD	%	<2%/<5%
	Voltage Unbalance Degree	%	<2%
Output Parameter	Output Phase Deviation	%	<3°
	Off-grid AC Output Voltage	V	380× (1±2%) V
	Off-grid AC Output Frequency	Hz	50× (1±0.1%) Hz
	3P4W Output Port (copper bar)	/	30/60kW
Other Parameters	PV MPPT Input Port (copper bar)	/	30/60kW
	Operation Screen	/	No
	Remote Data Monitoring	/	Yes

Easy to installation

Hatch ring for easy lifting Forklift handling & wiring without removing baffles Compatible with lifting and forklift handling

Easy to control

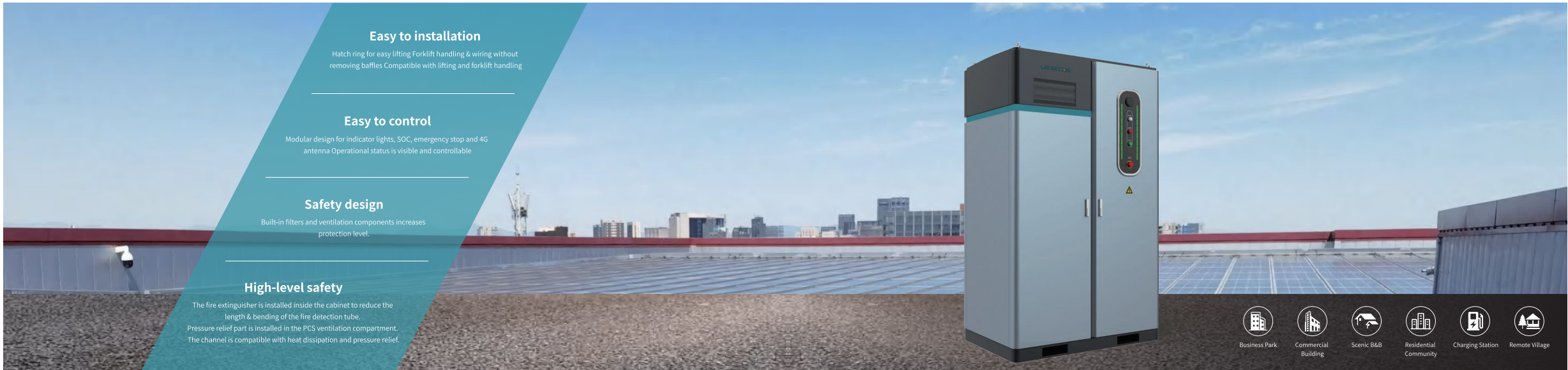
Modular design for indicator lights, SOC, emergency stop and 4G antenna Operational status is visible and controllable

Safety design

Built-in filters and ventilation components increases protection level.

High-level safety

The fire extinguisher is installed inside the cabinet to reduce the length & bending of the fire detection tube.
Pressure relief part is installed in the PCS ventilation compartment.
The channel is compatible with heat dissipation and pressure relief



Lenercom PESS



Power range: 2kW, 3kW
Battery capacity: 2560Wh, 3840Wh



Super power design
Easy to meet indoor, outdoor, electric car charging and other application scenarios



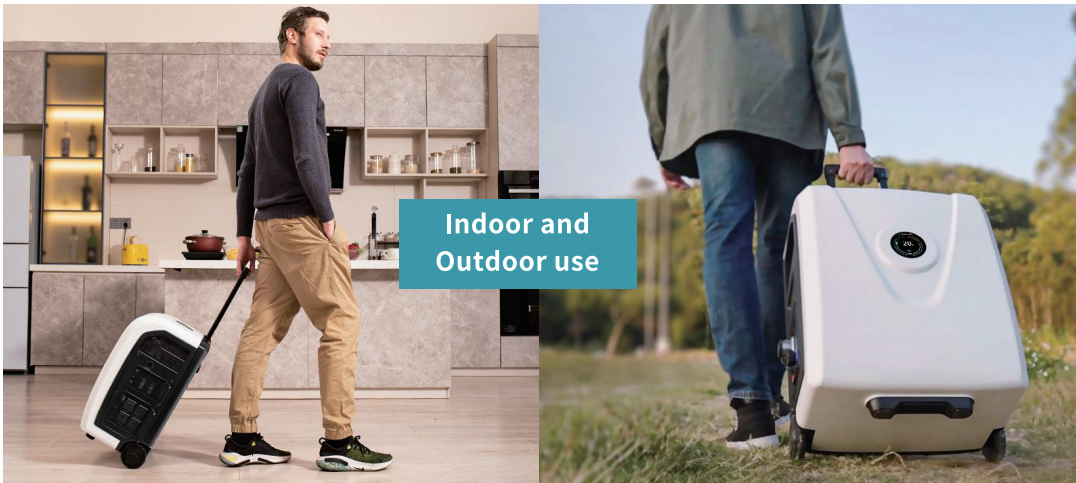
Residential storage level Portable ESS
Battery pack expansion up to 7680Wh for home mini-grid applications



Fast charging
Flash-Charged in 1.7Hrs
*P3000 experimental data

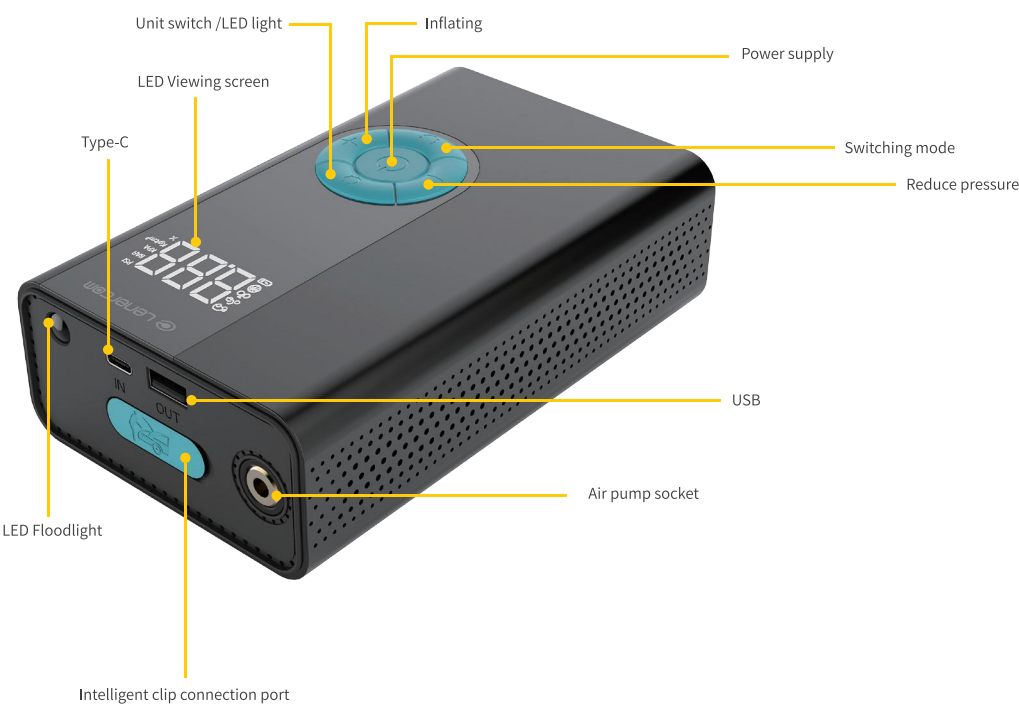


Automatic fireextinguishing technology
Built-in multiple security technology



	LC-P3000	LC-P2000
General		
Net Weight	46Kg	38Kg
Dimensions	569*443*312mm	569*443*312mm
Capacity	3.84kWh	2.56kWh
Certification Standards	UL CE FCC RoHS	UL CE FCC RoHS
APP (Bluetooth)	Support	Support
Output		
AC Output (4 ports)	220V~50Hz/60Hz	220V~50Hz/60Hz
Rated power	3kW	2kW
USB-A Fast Charge (x4 ports)	Support BC1.2, APPLE, SAMSUNG, QC2.0/QC3.0, FCP, AFC 18W Max per port	Support BC1.2, APPLE, SAMSUNG, QC2.0/QC3.0, FCP, AFC 18W Max per port
TYPE-C Fast Charge (x2 ports)	Support PD3.0, PPS 60W Max per port	Support PD3.0, PPS 60W Max per port
DC5521 Output	2 ports, 12V*10A total	2 ports, 12V*10A total
Wireless Charging	15W Max	15W Max
Input		
AC Input voltage	220V±15%~50Hz/60Hz	220V±15%~50Hz/60Hz
Solar Charging Input	1200W Max, 30V~85V	1200W Max, 30V~85V
charge		
Max.PV charging current	60A	60A
charging time in PV	3h	1.7h
Max.Gird charging current	40A	40A
charging time in Gird	3.9h	2.2h
charging time in Gird and PV	2.8h	1.7h
Battery		
Battery Chemistry	LiFePO4	LiFePO4
Cycle Life(0.5C)	4,000 Cycles to 80% Capacity(25°C)	4,000 Cycles to 80% Capacity(25°C)

Lenercom PESS



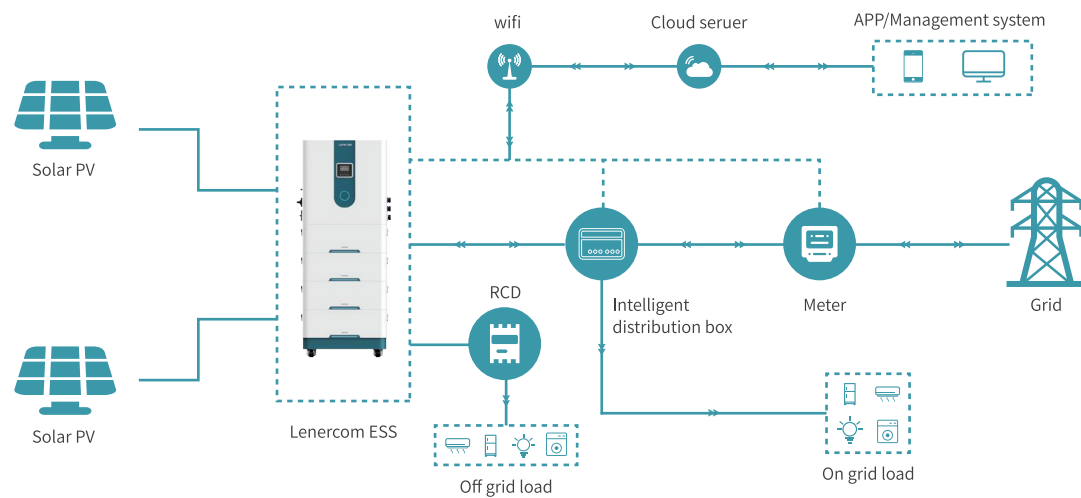
Multifunctional emergency start power supply



product model	LC- PM4-12
Battery Capacity	12000mAh
Type-C Input	5V/2A
USB Output	QC 3.0 18W
Air Pressure	150PSI(Max)
Start Current	800A
Peak Current	1500A
Operating temperature	-20°C~60°C
Charging time	About 6 hours
Product Size	164.5*99*49.5mm
Weight	About 0.8kg
Applicable model	Gasoline cars with 12V/7.0L displacement and diesel cars with 4.0L displacement



Household Microgrid system solutions

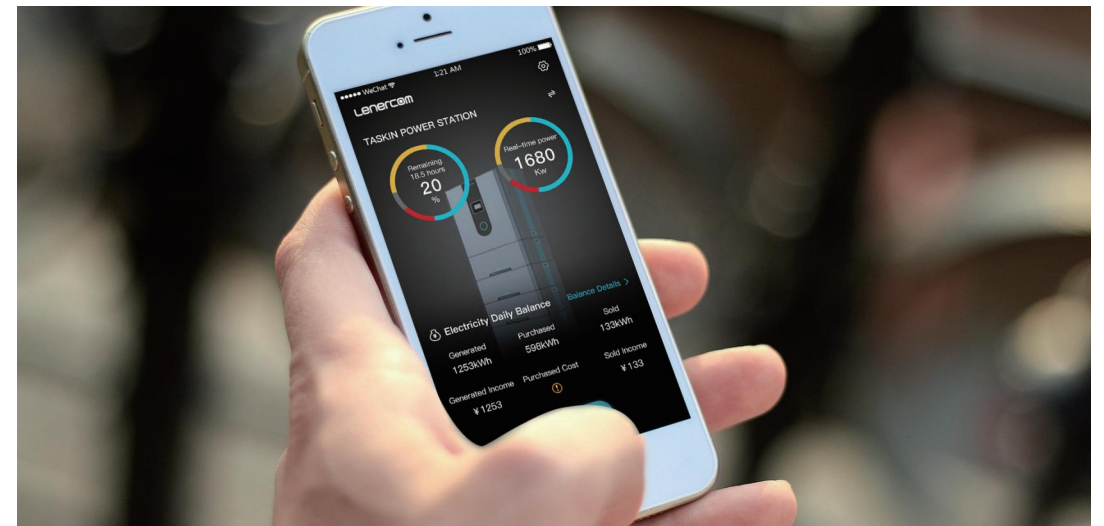


AI Intelligent Meter Box

- AI fault arc analysis, socket, wiring, electrical fire alarm in time to significantly reduce the incidence of fire
- Intelligent electrical fire information equipment
- Smart home APP remote switch
- Real-time monitoring of the whole house electrical switch standby status and electricity consumption
- Full power meter, voltage, current, power, power factor, power consumption, leakage current, temperature data and other electrical quantities
- Multi-class electrical safety data, high-frequency electrical safety electrocardiogram



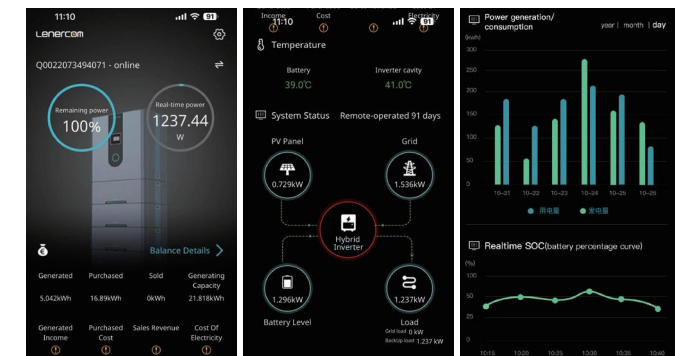
EMS



APP

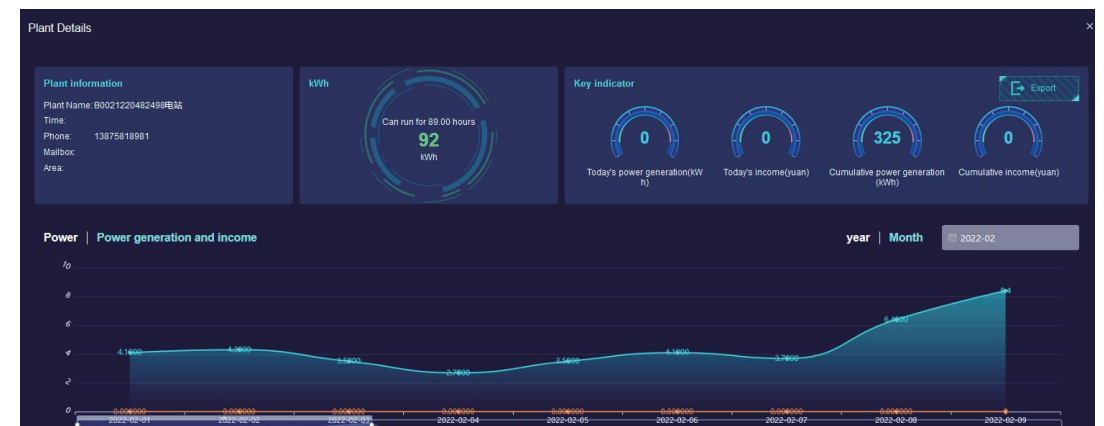
Interconnected with the supporting APP and EMS software to visually display the operating status of the equipment in the form of visual charts, so as to realize the remote control and fault repair of the whole series of Lenercom ESS products.

- Peak cutting and grain filling time set
- Remote control
- Operation mode setting
- Grasp the running status in real time



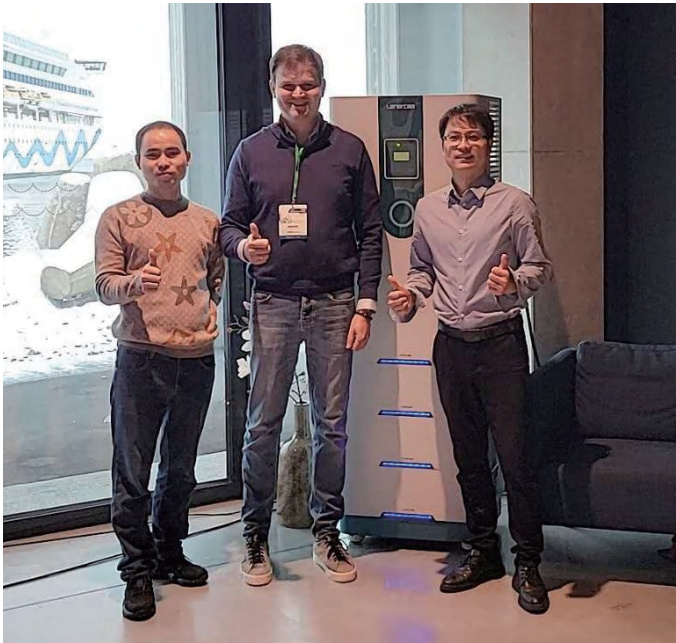
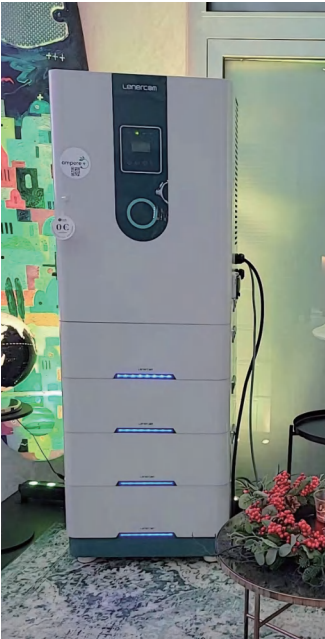
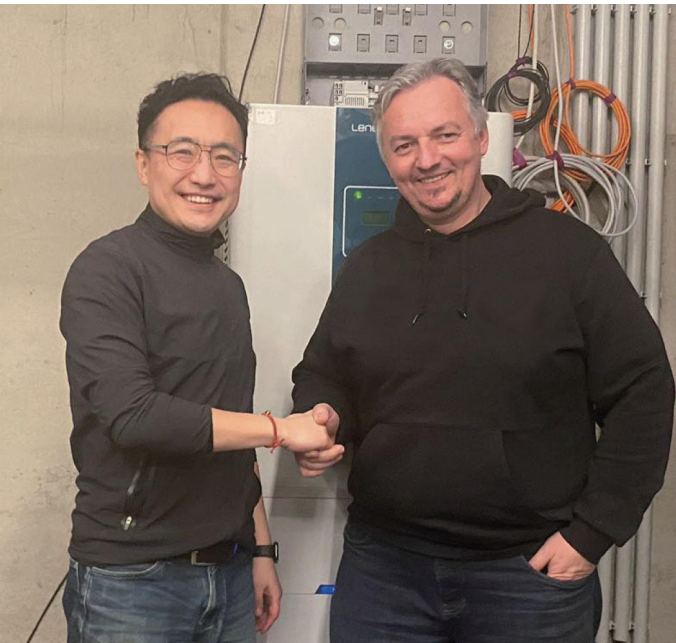
EMS

The fault data is automatically connected to the Lenercom EMS Cloud, which is convenient for distributors and after-sales engineers to solve any problems remotely.



Customer Solutions

served 20+ countries



Training and Supports

